

# TONEELHUIS / BOURLA THEATRE

## TECHNICAL DATA SHEET



### COORDINATES

Komedieplaats 18 (public entrance) – Graanmarkt, no number (artists, backstage)  
2000 Antwerp

[www.toneelhuis.be](http://www.toneelhuis.be)

Tel: 03/224 88 50

Fax: 03/224 88 42

### CONTACT

Technical Coordinator, Bourla  
Theatre  
Stage Manager  
Technical Director, Toneelhuis  
Assistant Technical Director  
Logistics Coordinator, Bourla Theatre

[Jens.laureyns@toneelhuis.be](mailto:Jens.laureyns@toneelhuis.be)  
[Henk.vandecaveye@toneelhuis.be](mailto:Henk.vandecaveye@toneelhuis.be)  
[Freek.boey@toneelhuis.be](mailto:Freek.boey@toneelhuis.be)  
[Sophie.debruyne@toneelhuis.be](mailto:Sophie.debruyne@toneelhuis.be)  
[Remke.Vanelstlande@toneelhuis.be](mailto:Remke.Vanelstlande@toneelhuis.be)

# THEATRE

## GENERAL

Loading dock for sets:

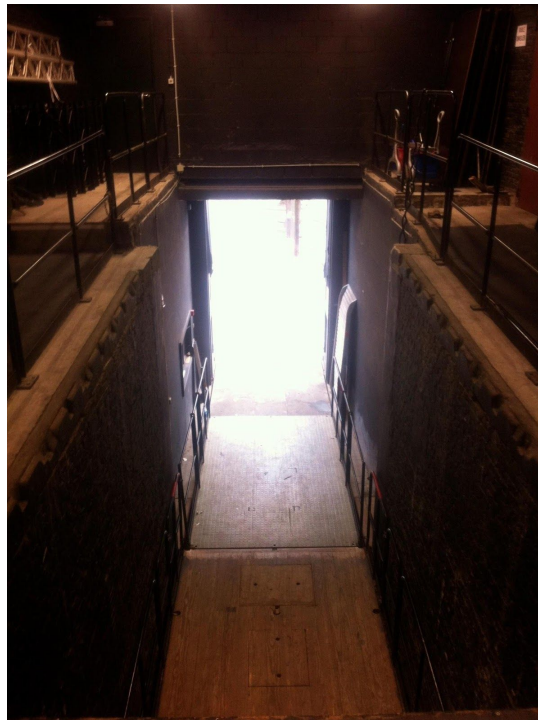
Loading entranceway:

Loading lift

Graanmarkt, 2000 Antwerp

W= 2.13m x H= 3.5m.

L= 8.85m x W= 2m x H= 3.06m  
(maximum capacity = 5 tons)



## AUDITORIUM

Total number of seats	950
Ground floor including stalls/orchestra pit	301
Ground floor excluding stalls/orchestra pit	233
Balcony 1 including side balconies	205 (middle section 134)
Balcony 2 including side balconies	193 (middle section 110)
Balcony 3 including side balconies	116 (middle section 56)
Balcony 4	135

## STAGE

Floor: MDF floor painted black, with a **4.5%** incline

Stage opening: **10.53m** wide x **7.20m** high. (max. height of Fixed Opening)

Tormenter openings from **10.56m** to **14.00m** can be arranged.

Depth of playing area between zero point and back wall: **16.33m**.

Depth of playing area between forestage and zero point: **3.28m**.

The Bourla Theatre's zero point is at the intersection of the midline of the stage and an imaginary line that can be drawn along the front side of the movable tormenters.

Total width of stage: **23.20m**.

Total width with standard black side curtains: **18.30m**. (black box)

[The seating plan can be found here.](#)

Rows 13 & 14 are reserved for the technical crew.

## Masking

6 x	half black backdrops	H= 9m x W= 8m
14 x	black legs	H= 9m x W= 4.5m
4 x	borders	H= 3m x L 14m
2 x	borders	H= 5m x L 14m
1 x	white horizon	H= 8.80m x W= 12m

## Orchestra pit

The first four rows of seats (A,B,C,D, 0% incline), also called **stalls**, are in the orchestra pit area.

The stalls can be removed.

In a lowered position, this area can be used as an orchestra pit.

In a raised position, this area can be used as an extension of the stage to make a forestage of 5.5m deep.

A 360° panoramic view of the theatre can be found [on our website](#).

## Hoisting system

During the last big renovation of the Bourla Theatre in 1993, a **manual fly system** was installed.

The manual fly system is both on stage right and stage left.

It is operated from the passerelle (accessed from 4<sup>th</sup> floor of the theatre).

The maximum carrying capacity per fly is 250 kg.

The flies are 14.4m long and 50mm in diameter.

24 manually operated flies. Max. height = 17.50m (taking into account the incline of 4.5%).

Fly numbering: 4, 6, 7, 8, 9, 11, 13, 14, 19, 20, 21, 23, 25, 26, 30, 31, 33, 34, 37, 38, 42, 43, 44 and 45

### Catwalks and passerelle

The passerelle goes all around (stage right, back, stage left). Height at the back is 9.62m.

The grid is at H = 18m (taking into account the incline).

8x fixed catwalks (**not to be used**) divided across the entire depth of the stage. Height = 11.50m

**ž; @ &41?1/-@-8?->1/; 9<: 1: @; 2@1; >55-8: 0@A?< @/@0<->@ 2@1 ; A8  
&41-@1**

### Motorised Trusses

The motors are operated from upstage right at stage level.

The motors have 1 fixed speed (**8m/min**).

The trusses have a maximum carrying capacity of **500 kg**.

1x lighting truss (motorised) above the rows of seats in the auditorium, -6.60m from the zero point. Max H = 14m. (**500 kg**)

1x sound truss (motorised) above the front stage, - 3.00m from the zero point. Max H = 14m. (**500 kg**)

The fire curtain is - 1.40m from the zero point.

1x scrim fly (ladder truss on 2 motors, between the portal bridge and \*proscenium arch), - 0,9m from the zero point. Max H = 8.50m. (**120 kg**)

1x movable portal bridge with mains connection, **0.4m** from the zero point. **Max H = 6.80 m**.

5x trusses (with 2 motors). Max H +/- 11.00m.

2x side trusses 1x stage left and 1x stage right: Max H = 9m from centre stage: 9.15m (**500 kg**)

2x side flies 1x stage left and 1x stage right: Max H = 9m from centre stage: 8.00m (**500 kg**)

## LIGHTING

**19< >@: @ ; @ & ž . / ' f/B- < > 045304-01/; 9<-: E &41-B B. 55E; 29-@>58-: O  
1-4591 @/-::; @ 13A >: @10C3; A@B>B- @:**

### Dimmers

300 x Reiche & Vogel LR3B 2.5 kw  
5 x Reiche & Vogel LR5B 5 kw

### Consoles

1 x Grand MA2 Lite  
1 x Grand MA2 Ultra Lite  
1 x Grand MA2 fader wing

### Lights

number	Type	capacity	brand	location
16	Profile 710SX 10°/25°	2.5 kw	Robert Juliat	Zaalbrug
8	Profile 711SX 8°/16°	2.5 kw	Robert Juliat	Zaalbrug
24	profile 13°-38°	2 kw	Enizoom	4° zijbalkon
4	BT	1 kw	Reich & Vogel	4° zijbalkon
22	profile dvw 104 38°/57°	1.2 kw	ADB	stage
12	profile ds 105 15°/38°	1.2 kw	ADB	stage
8	profile warp 22°/50°	0.8 kw	ADB	stage
13	PC C101	1 kw	ADB	portal bridge
20	PC C103	1 kw	ADB	stage
11	PC	0.5 kw	ADB	stage
4	studio Fresnel	5 kw	ADB	stage
16	Fresnel F201	2 kw	ADB	stage
10	studio Fresnel	2 kw	ADB	stage
22	par 64 CP 60	1 kw		stage
22	par 64 CP 61	1 kw		stage
33	par 64 CP 62	1 kw		stage
10	par 36			stage
18	single ACP	1 kw	Reiche & Vogel	stage
15	double ACP	2 x 1kw	Reiche & Vogel	stage

## Power

- 1 x CEE 63A 3phase + N 240/400V + 2 x CEE 32A 3phase + N 240/400V: upstage right
- 1 x CEE 32A 3phase + N 240/400V: downstage right
- 1 x CEE 125A 3phase + N 240/400V: centre stage right
- 1 x CEE 63A 3phase + N 240/400V + 2 x CEE 32A 3phase + N 240/400V: upstage left
- 1 x CEE 63A 3phase + N 240/400V + 2 x CEE 32A 3phase + N 240/400V: downstage left

Separate 16A Schuko power outlets are spread across the stage for the use of sound equipment.

On -1 (one level below stage-level) on stage right and left there is an extra earthing pin.

## SOUND

~~19< >@: @ ; @ & ž . . / ' f/B- < > QV53@H- @1/; 9<-: E &41-B B. 5E; 29-@>58-: O  
1-4591 @-:.; @ 13A >: @10C3; A@B>58- @:~~

## Mixing consoles

(on request)

## Operation

Input

### Stage right

- 12x analog in (1x LK37 m + 4x XLR m parallel ) parallel with FOH
- 12x analog out LK37 (1x LK37 f + 4x XLR f parallel) parallel with FOH and amp-city
- 2x Opticalcon duo
- 8x UTP cat6
- 4x speakon patched to stage left

### Stage left patched to stage right

- 16 x 8 analog
- 2x opticalCON duo
- 8x UTP cat6
- 4x speakon

### FOH

- Dante PRIM & SEC network patch
- 4x Opticalcon duo
- 12x analog in (1x LK37 m + 4x XLR m parallel ) parallel met Jardin
- 12x analog out (1x LK37 f + 4x XLR f parallel) parallel met Jardin en amp-city
- 12x UTP cat6
- 5x BNC to projection booth

## Output

Yamaha RSio64-D / DANTE + tablet PC (48Khz & 96Khz)

12x analog out LK37 (1x LK37 f + 4x XLR f parallel) parallel with FOH and Stage right

8x AES3 possible on network

foh → (AES3 input true DANTE)

Array L-R

Downfill L-R

Centre

J-sub L-R

Frontfill (mono)

## Extra

6 x D6 (stereo amp)

## **Speakers + amplifiers**

FOH

FOH

d&b

T-system / D6 amps

with 2 J-sub / D12 amp

Monitors

12x D&B M6 / D6 amp

Surround

Power outlets for surround sound on the 4th balcony and on the ground floor at the back (NL4)

## **Peripherals**

(on request)

- Compressors
- Gates
- FX engines
- CD/MD players
- Preamps
- EQs

## **Mikes + DIs**

(on request)

## **Wireless microphones**

(on request)

## PA / INTERCOM

There is a PA system running from the stage manager's console to the entire back part of the building (artist quarters, canteen, doorkeeper, corridors).

There is also a PA to the front of the building (corridors around the auditorium and lobby)

Sound control desk, stage manager's console, passerelle and other control points can communicate with each other via an ASL intercom.

4 separate intercom lines are available; each control point can be connected to these lines through a matrix.

There are 5 wireless intercom belt packs (Altair wpb-210)

## VIDEO

~~19< >@: @ ; @ & ž . / ' f/B- < > 0V53@H- @1/; 9<: E &41-B B. 5E; 29- @58-: O  
1-4591 @-:: ; @ 134 >: @10C5; A@B1E2- @5:~~

A projection booth is located in the middle of the 1st balcony.  
Distance to midpoint of the stage is **25m**

### Beamers

- 1 x Panasonic PTD-6000 (6000 Ansi) + corresponding lenses
- 1 x Panasonic PT-DZ 8000 (8000 Ansi) + corresponding lenses
- 1 x Panasonic PTD 13K (12000 Ansi) + corresponding lenses
- 1 x Christie projector (10,000 Ansi) + corresponding lenses

### Screens

- 1 x 4/3 or 16/9 rear or front projection (4.20m x 3.20m) (5.68m x 3.20m)
- 2 x 3 X 2.25m rear screen
- 1 x 15 X 9m white infini

### Video equipment

- 1 x Extron ISS506 scaler
- 2 x Edirol V-4 video mixer
- 1 x Videoswitcher Roland V40-HD

## MISCELLANEOUS

black/white vinyl dance floor

ALP tower waggon: max. floor height = 8.50 m (max. reach +/- 10.5m)



2 x JEM ZR22 smoke machine  
2 x ZR44 smoke machine  
1 x MDG MAX 5000 smoke machine  
1 x DF 50 hazer  
3 x Antari HZ-500 hazer  
1 x MDG Atmosphere hazer  
10 x HOAC stage elements (2m x 1m) + one adjustable on standard legs

Wifi available on stage and in the auditorium

### **Dressing rooms & artist quarters**

The dressing rooms are on the 3rd floor.  
There are 7 dressing rooms for a total of +/- 30 people.  
Showers and toilets are located opposite the dressing rooms.

### **Work routine**

TONEELHUIS does NOT have a work routine of rotating teams or shifts.  
A normal building day runs from 10 to 22u, a normal show day from 10 to 24u.  
(EXCEPTIONS ARE OF COURSE POSSIBLE)

### **Safety**

Safety shoes – in other words, closed shoes with steel toes – are required at all times while building up and breaking down.

We assume that everything you take with you meets all the requirements of the Belgian government code for general health and safety in the workplace (Codex algemeen welzijn op het werk).

### **Fire safety**

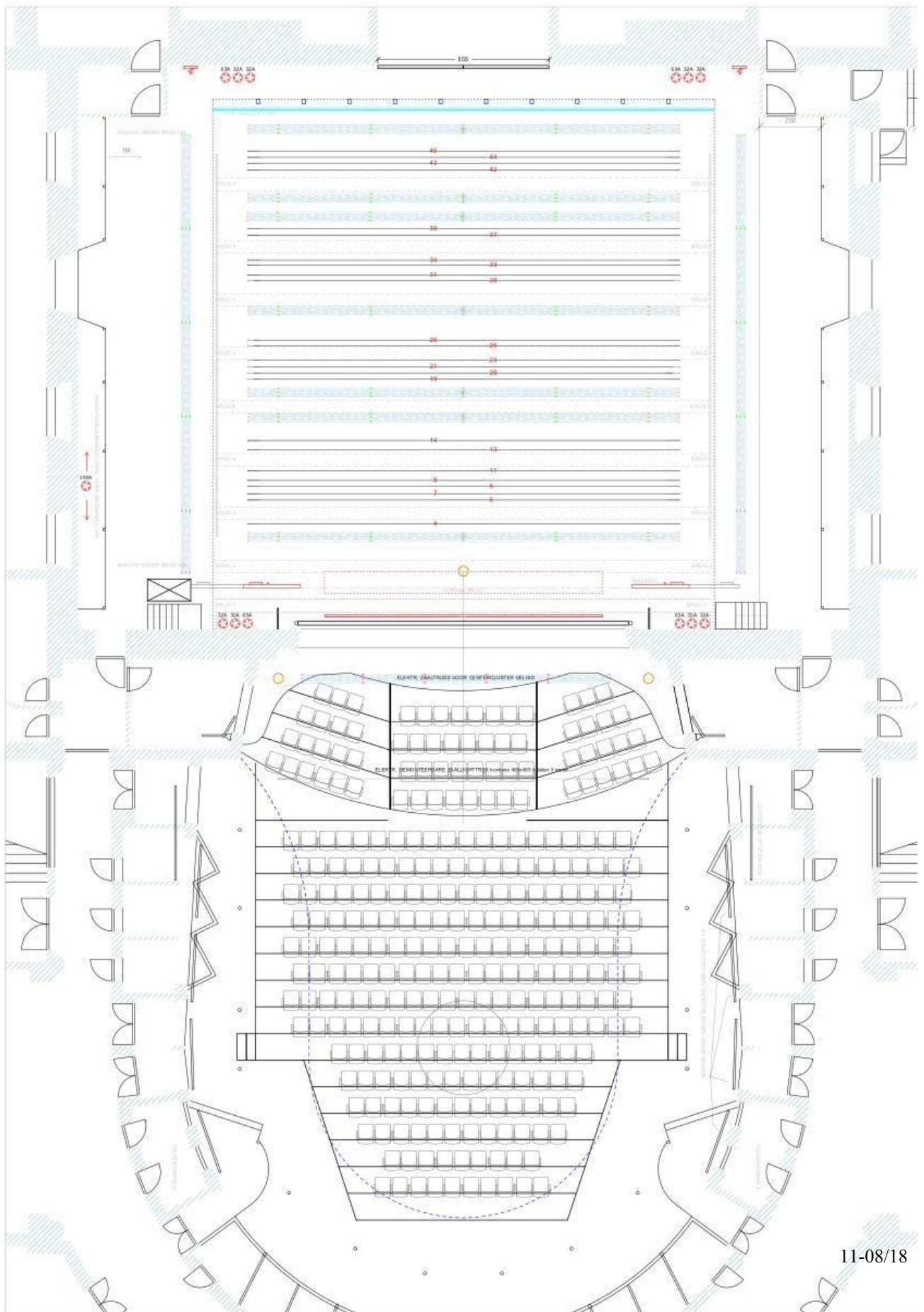
Productions on tour are required to travel with safety certificates that must be produced upon request. All parts of the set, curtains, etc. should be treated with fire resistant coating or painted with fire retardant paint.



With kind regards,

**THE TONEELHUIS / BOURLA CREW**

10-08/18



# TONEELHUIS

Los- en laadplan voor opleggers  
Graanmarkt, 2000 Antwerpen

